



SIR ARTHUR LEWIS COMMUNITY COLLEGE
 DIVISION OF AGRICULTURE
 END OF SEMESTER ONE EXAMS



ASSOCIATE DEGREE IN GENERAL AGRICULTURE

ANIMAL SCIENCE- ASC 102

DECEMBER 2013

Duration: 2 ½ hrs

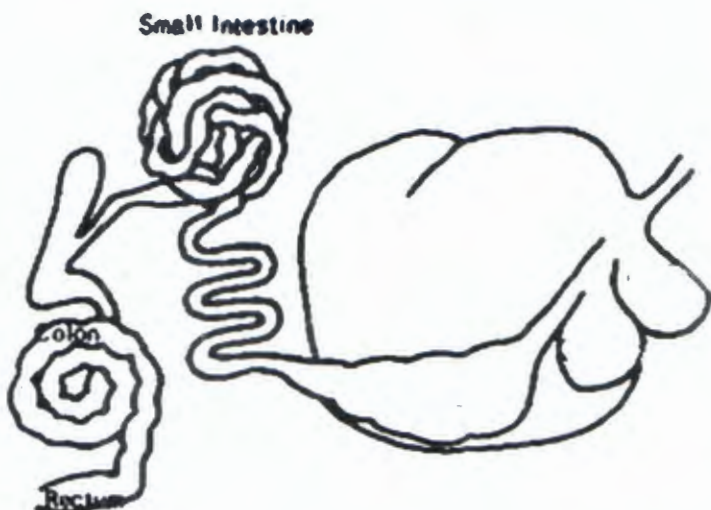
#A62

This paper consists of FIVE (5) questions. You are to answer ALL. Marks allocated to each part of a question are indicated in brackets at the end of each part.

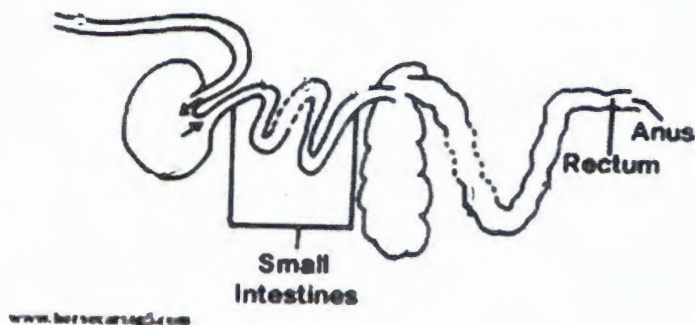
1. a. Give FOUR functions of the musculoskeletal system. (4mks)
- b. Differentiate among the three types of cells that make up bone. (6 mks)
- c. Name the different types of muscles which make up the muscular system and state where they are located. (6mks)
- d. Explain how a muscle contraction occurs. (4mks)

2. a. Distinguish between the following pairs of terms; (6 mks)
 - i. **Central nervous system (CNS)** and **peripheral nervous system (PNS)**
 - ii. **Afferent** and **efferent** nerves.
 - iii. **Somatic nervous system** and **autonomic nervous system**
- b. Using a clearly labelled diagram to assist you, explain the reflex arc. Be sure to indicate the roles of each type of neuron involved. (14 mks)

3. The process of digestion occurs differently in animals based on the diets they consume.
 - a. Identify the animals which have the type of digestive systems labelled A and B below. (2mks)



A



B

- b. Compare and contrast the process of digestion between these two animals. (10 mks)

4. Differentiate between the following terms

i. internal and external respiration. (4 mks)

ii. inspiration and expiration (4 mks)

b. List the main structures involved in respiration. (9 mks)

c. Give any THREE (3) functions of the respiratory system. (3 mks)

5. a.  Explain the flow of blood through the heart. (14 mks)

b. Label the diagram of the heart which follows: (6mks)

